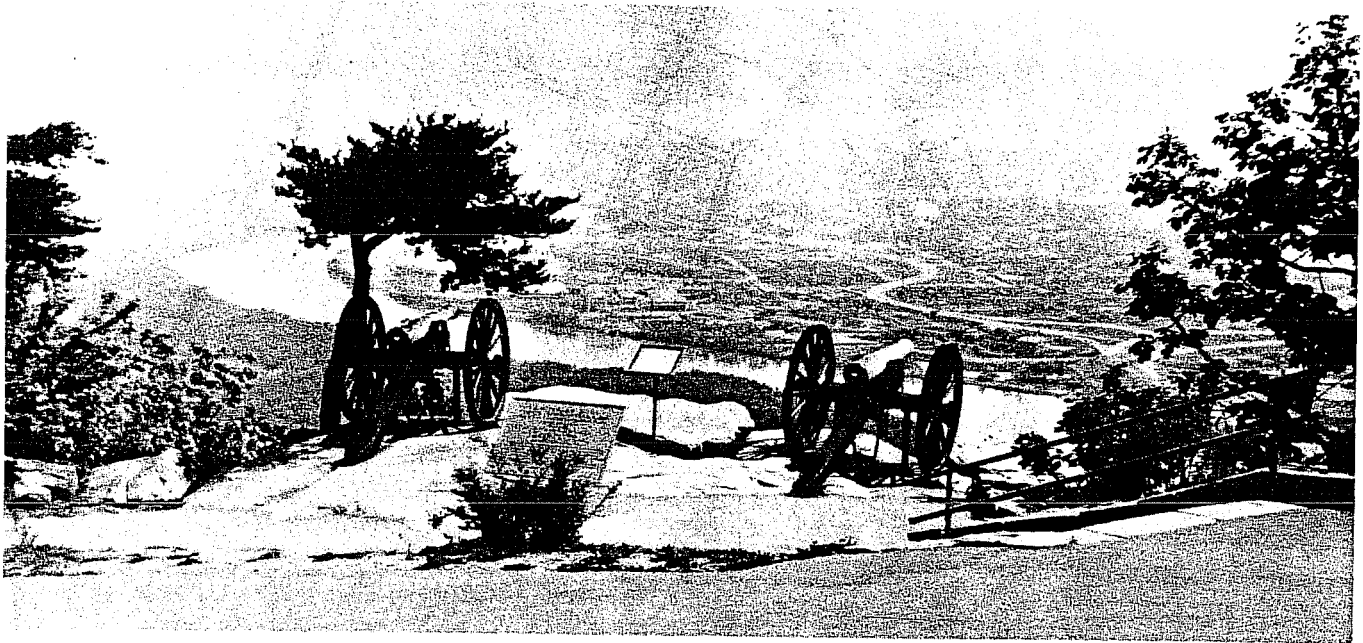




# BLUE BEAVER TRAIL, INC.

P. O. BOX 38 • HIXSON, TENNESSEE 37343



## Its History:

"The Beavers in blue" was a phrase coined by the Confederates to describe the activity of the Unions bottled in Chattanooga, who were busy clearing trees for fuel, shelter, and fortifications. It is from this random phrase made in 1863 that the trail name was chosen.

On October 26-27, 1863, Grant ordered 1500 men on pontoons to float down the river from Chattanooga, while a second group had orders to march across Moccasin Bend. The pontoon crossing was made just below Brown's Ferry.

This action coupled with Hooker's advance from Bridgeport toward Chattanooga allowed the Unions to re-open a short line of supply and communication with Union Headquarters and supply at Nashville.

The area around Brown's Ferry and Tavern to Lookout Creek was in control of the Union forces. By November 24th, Hooker again moved into action. Previous attempts to scale Lookout Mountain from the west side had been thwarted by Confederates stationed on Signal Mountain who had signaled information about Union movements to their forces on Lookout. On this event-filled day, a heavy fog capped the mountain and all signal attempts were in vain. The Unions fought up the rugged, steep, and heavily timbered terrain of Lookout Mountain.

About halfway up the mountain and on a level area, stood Craven's farm. By noon, Hooker's forces were in possession of the farm. The Confederates made a determined stand to the south of the house, and by 2 p.m. the fog moved down to Craven's house making visibility and shooting impossible. At a later date, this action was called the "Battle Above the Clouds."

Later the fighting moved to Missionary Ridge. Gradually the way opened for Sherman's eventual march to the sea, and peace once more came to this area.

## The Trail:

All hikers will begin their hike at the "Reflection Riding Nature Center" sign located on Hwy. 148 approximately 300 yds. from the junction of Highway 11 and 148. Follow the Reflection Riding (RR) markers. RR is a non-profit corporation of about 400 acres designed to preserve and maintain the natural beauty of this area. Trees, shrubs and flowers are marked, thereby providing an excellent opportunity to study the characteristics of these marked specimens. Please use only the established roads through RR and don't allow hikers to walk across planted areas.

It is strongly suggested that you take your time hiking through RR.

There is an interesting legend of an Indian Chief and a view of Sunset Rock that is worthy of your time.

At the southern boundary of RR, just before you enter the National Park area, notice the markings indicating how the Unions lined up. Historically, the Unions formed a line from Lookout Creek straight up the side of the mountain. This line moved as a segment from the west toward the east side of the mountain. The major encounter of the "Gray and Blues" was at Craven's House.

Craven's House, operated by the National Park Service, was restored by the Association for the Preservation of Tennessee Antiquities in 1956. Here one can see Missionary Ridge to which the Confederates withdrew after fog made fighting impossible there. On November 25th, Union soldiers took the mountain top with only token sniper resistance.

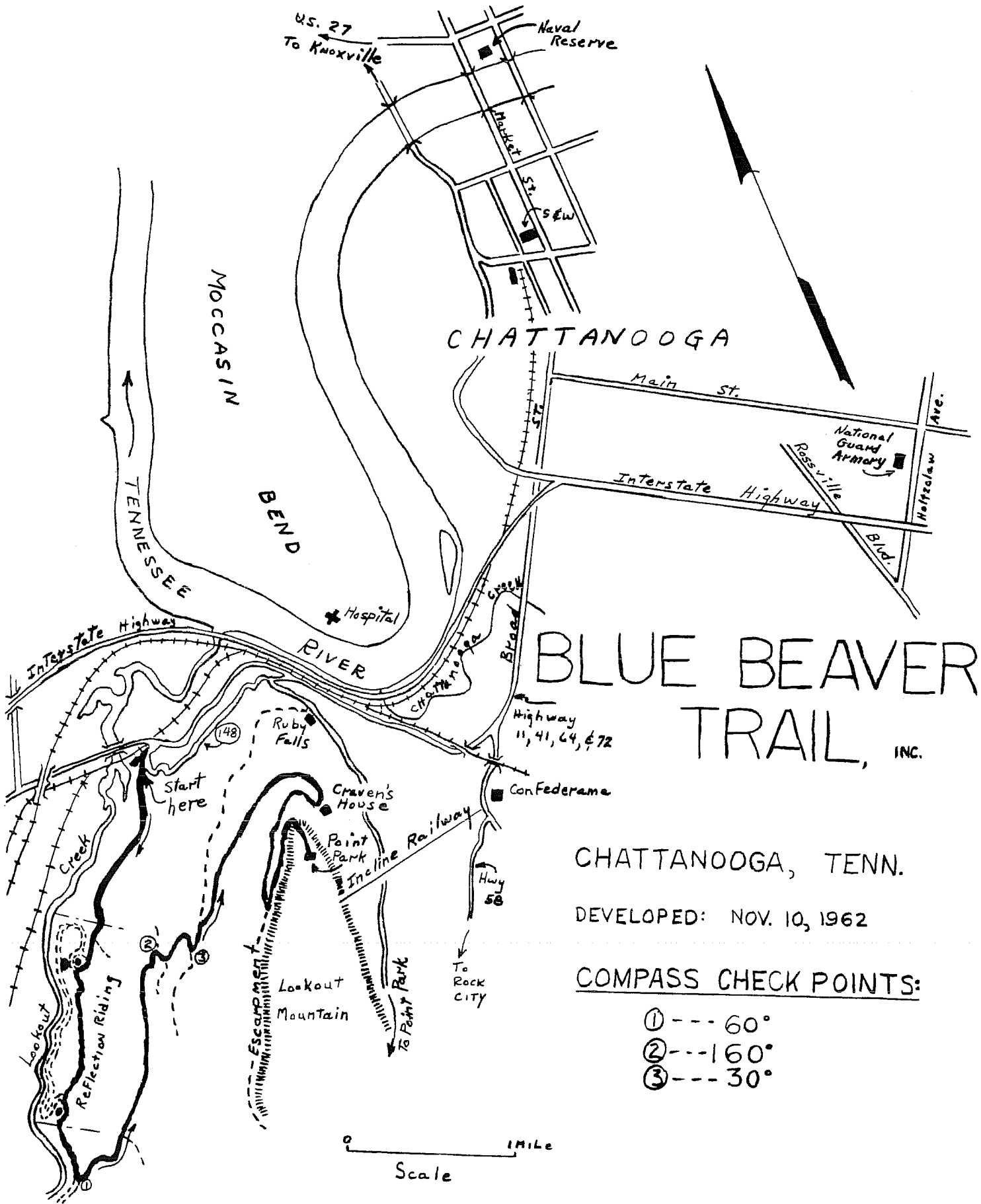
Water is usually available at Craven's house, except during the winter months. This spot is usually a good spot for a lunch break. Look up toward Point Park and you'll have a good view of the escarpment and the natural ruggedness of this beautiful country.

The trail continues to gradually weave back and forth until you are at the base of the escarpment. A good iron stairway will make it possible to reach Point Park with ease.

At Point Park, you are approximately 10.5 miles from the start of the trail and some 1400 ft. above the elevation at the start. After leaving RR, the remainder of the trail route follows National Park service trails within the Chickamauga and Chattanooga National Military Park.

## Trail Requirements:

1. Any registered Scout or Explorer can walk the trail to earn the trail awards.
2. Scouts and Explorers should be in complete scout uniform.
3. It is advisable to wear summer uniforms from May through September. Tee shirts are acceptable.
4. The hike must be completed in one day and all groups must clear Lookout Point Park no later than 5 PM (E.S.T.)
5. One adult scouter must accompany each group of ten hikers.
6. Check with your council and observe travelling requirements.
7. This trail is also open to all registered members of the Girl Scouts. Uniforms are optional.
8. Hiking groups, other than scouts, are also invited to walk the trail.
9. All hikers should have read "Chickamauga and Chattanooga Battlefields" Series No. 25. These are available from the Superintendent of Documents, Washington, DC 20402.



CHATTANOOGA

# BLUE BEAVER TRAIL, INC.

CHATTANOOGA, TENN.

DEVELOPED: NOV. 10, 1962

## COMPASS CHECK POINTS:

- ① --- 60°
- ② --- 160°
- ③ --- 30°

0 1 MILE  
Scale

## EMERGENCY INFORMATION:

In case of an emergency, contact the Park Ranger at:

Day — Point Park — 821-7786  
Day — Park Headquarters — 866-9241  
Night — Ft. Oglethorpe P.D. — 866-2512

## General Information:

1. Average trail time is 4½ hours.
2. Schedule your hike so that your group will pass through Look-out Point Park between 8:00 A.M. and 5:00 P.M. Chattanooga time (E.S.T.)
3. This is copperhead and rattlesnake country. Stay on the trails. Be alert. One snakebite kit per troop is recommended.
4. All scouts must walk the full trail observing all scout safety precautions, courtesy, and displaying conduct that will favorably impress all persons on the trail route.
5. Marking or defacing any of the monuments, buildings, or other property on the trail route will result in disqualification of the hiker or his group.
6. The trail can be hiked all year except during snow or ice conditions.
7. Purchase of trail awards is optional.
8. Compass readings are shown for the lower part of the trail, and can serve as a valuable training aid for your scouts.
9. Encourage scouts to pocket gum wrappings and other litter. Litter cans are available in Point Park.
10. Orange-yellow trail blazes will be found beyond the R. R. area on trees and rocks. These have been placed at critical points along the trail where there might be some doubt as to the trail routing.

## Overnight Facilities

### WINTER QUARTERS:

- |  |  |
|--|--|
| 1. Commanding Officer<br>Naval & Marine Corp.<br>12 Meadow St.<br>Chattanooga, TN 37405<br>Phone: (615) 267-2111 | 2. Commander<br>Tenn. Army National Guard<br>1801 Holtzclaw Ave.<br>Chattanooga, TN 37404<br>Phone: (615) 267-8566 |
|--|--|

### SUMMER CAMPSITES: (Tentage Required)

- |  |  |
|--|--|
| 1. Chester Frost Park<br>2318 Gold Point Circle Rd.<br>Hixson, TN 37343<br>Phone: 842-0177 | 2. Harrison Bay State Park<br>8411 Harrison Bay Rd.<br>Harrison, TN 37341<br>Phone: 344-6214 |
|--|--|

Note: Both parks have city water, bathroom facilities, and swimming areas.

### ADDITIONAL HIKING TRAILS IN THE AREA

- |  |   |
|--|---|
| 1. Nolichucky Jack Trail<br>P.O. Box 38<br>Hixson, TN 37343      | 2. River Mont Cave Historic Trail<br>P.O. Box 122<br>Bridgeport, AL 35740 |
| 3. Chattanooga Historic Trail<br>P.O. Box 38<br>Hixson, TN 37343 | 4. Chickamauga Trails<br>P.O. Box 488<br>Rossville, GA 30741              |

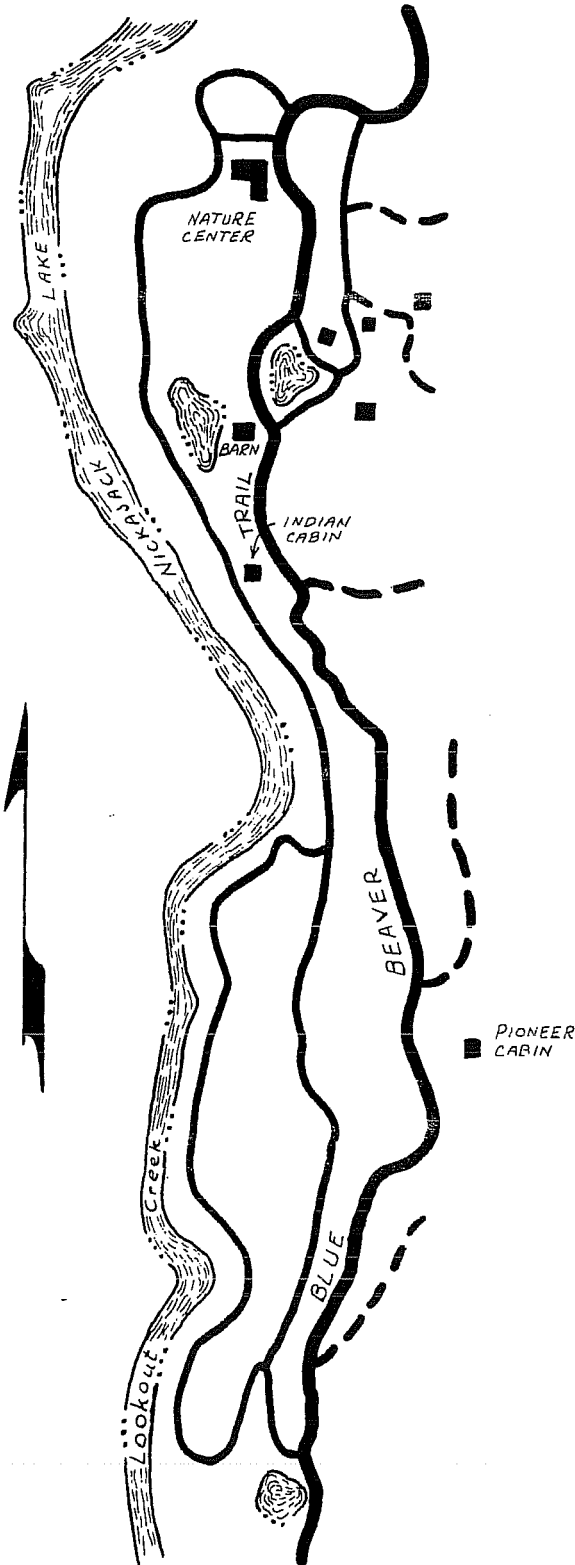


Craven's House



Start of Trail

# Application for Awards



**REFLECTION RIDING**



**PLEASE PRINT:**

Hike Leader \_\_\_\_\_  
 Street \_\_\_\_\_  
 City \_\_\_\_\_  
 State \_\_\_\_\_ Zip \_\_\_\_\_  
 Troop # \_\_\_\_\_  
 Council \_\_\_\_\_  
 Total Hikers \_\_\_\_\_  
 Date Hiked \_\_\_\_\_

**Award Prices:**

Medal BBT	\$3.00
Patch BBT	\$2.00

**Awards desired:**

Patches	@ \$2.00	=	_____
Medals	@ \$3.00	=	_____
Shipping costs		=	\$1.00
<b>TOTAL</b>		=	_____

**Make all checks payable to:**

BLUE BEAVER TRAIL  
 P.O. Box 38  
 Hixson, TN 37343

Special rates are available to go through the Nature Center to scout hiking groups. Apply prior to your hike. Do not use the bathroom facilities at the Nature Center.